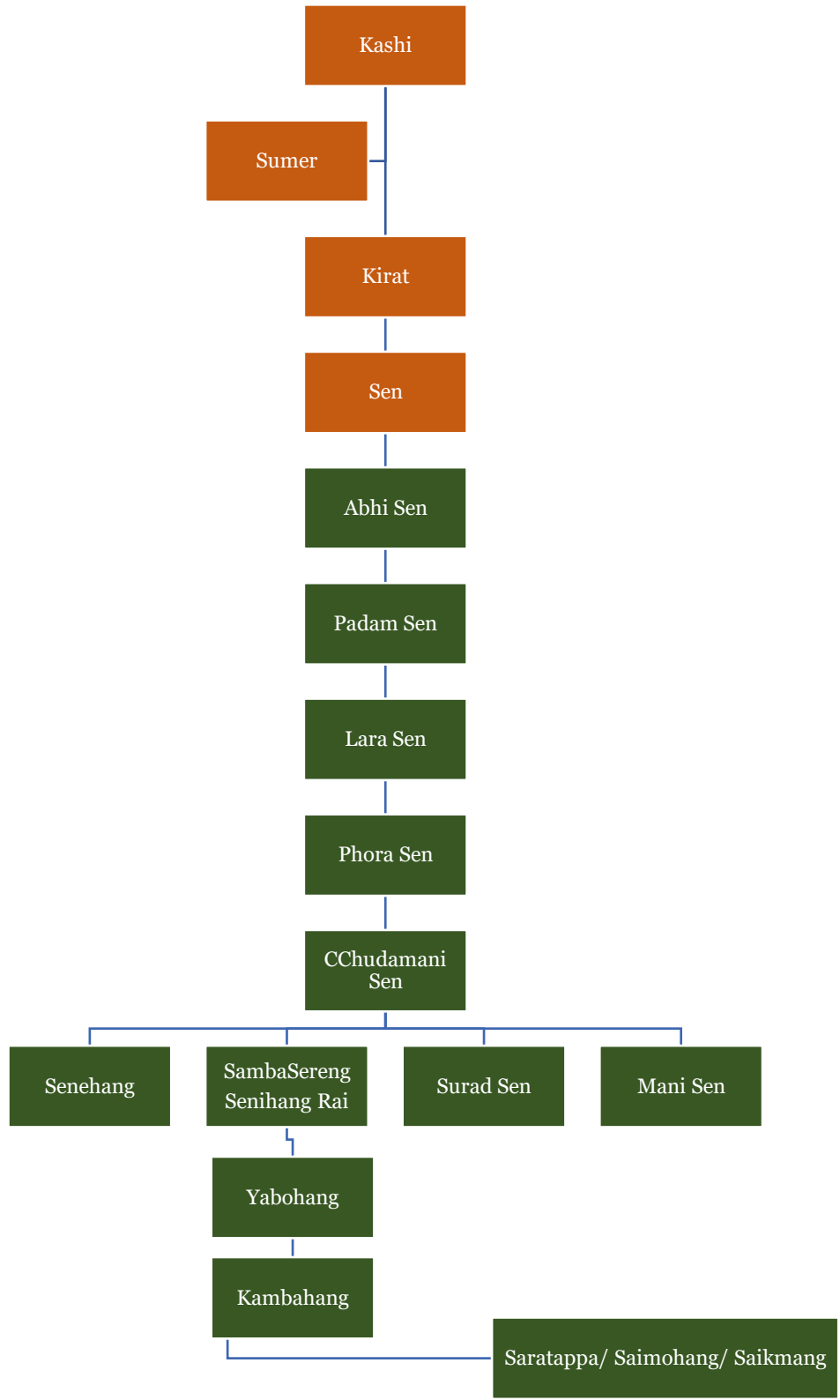
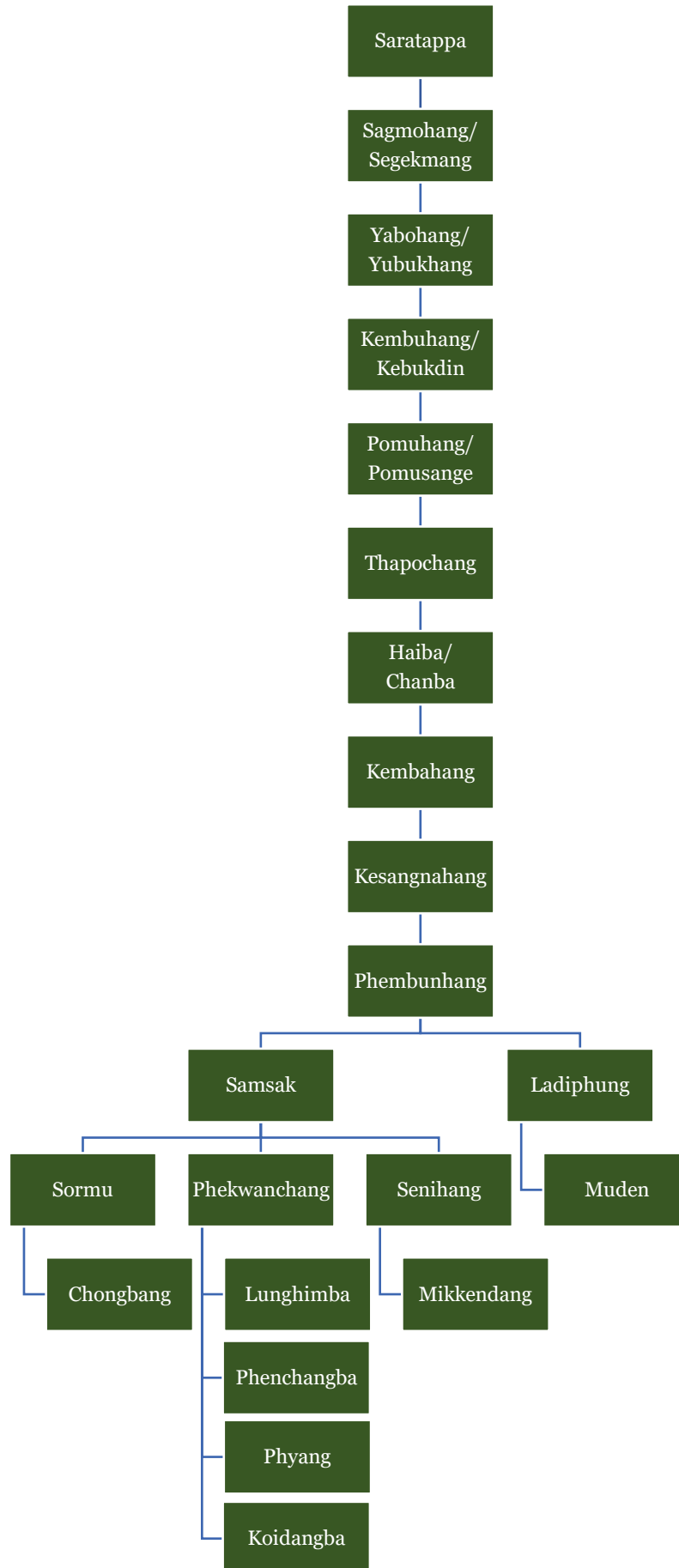


Phyang Samba Ancestry and Genealogical Update by Dr. Nawa Raj Subba



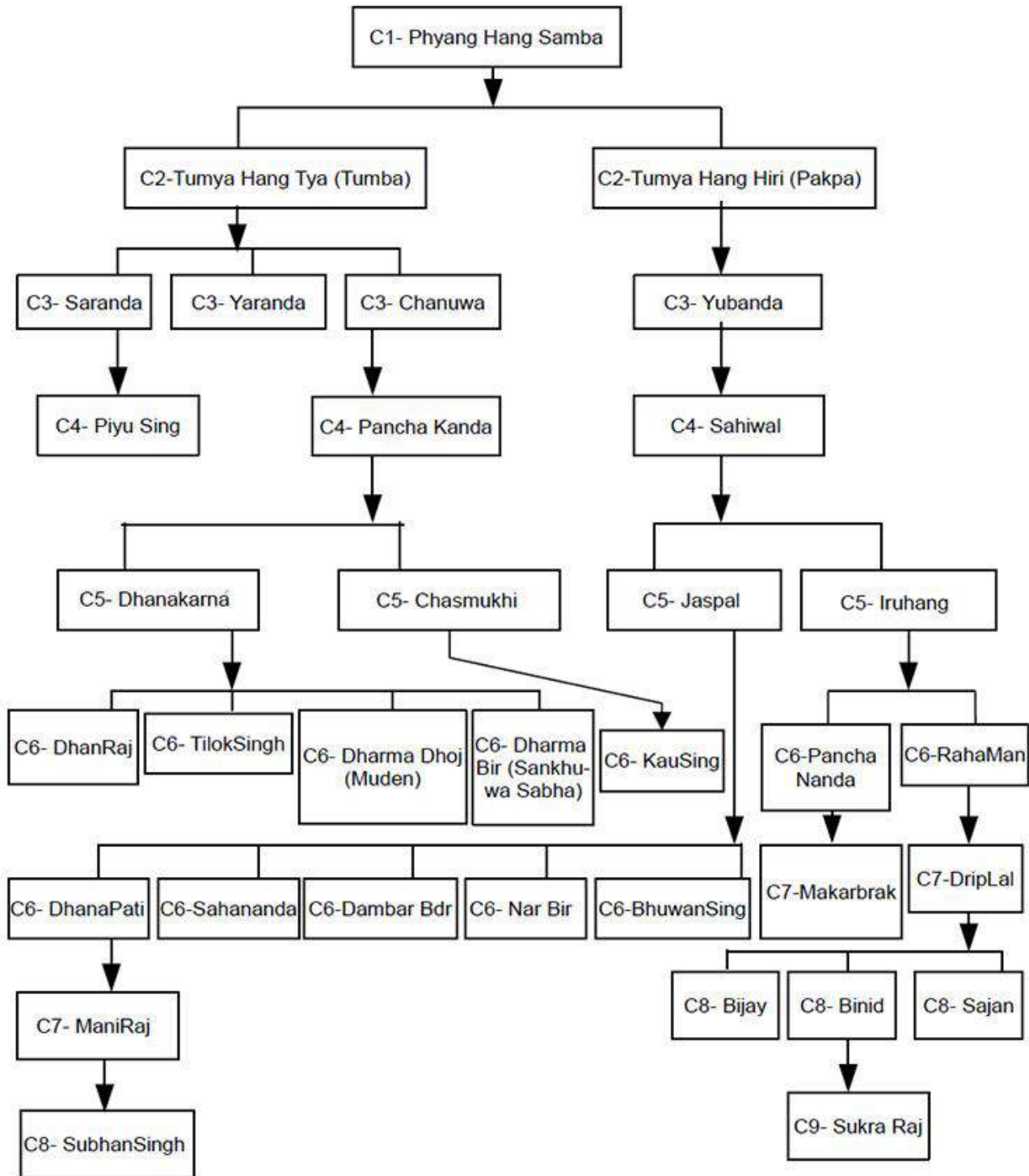
References: PhyangAR, 1999; PhyangRB, 2019; PhyangP, 2019; PhyangMH, 2019.

Phyang Samba Ancestry and Genealogical Update by Dr. Nawa Raj Subba



Phyang Samba Ancestry and Genealogical Update by Dr. Nawa Raj Subba

**Phyang Family Ancestry
 (Stage C)**

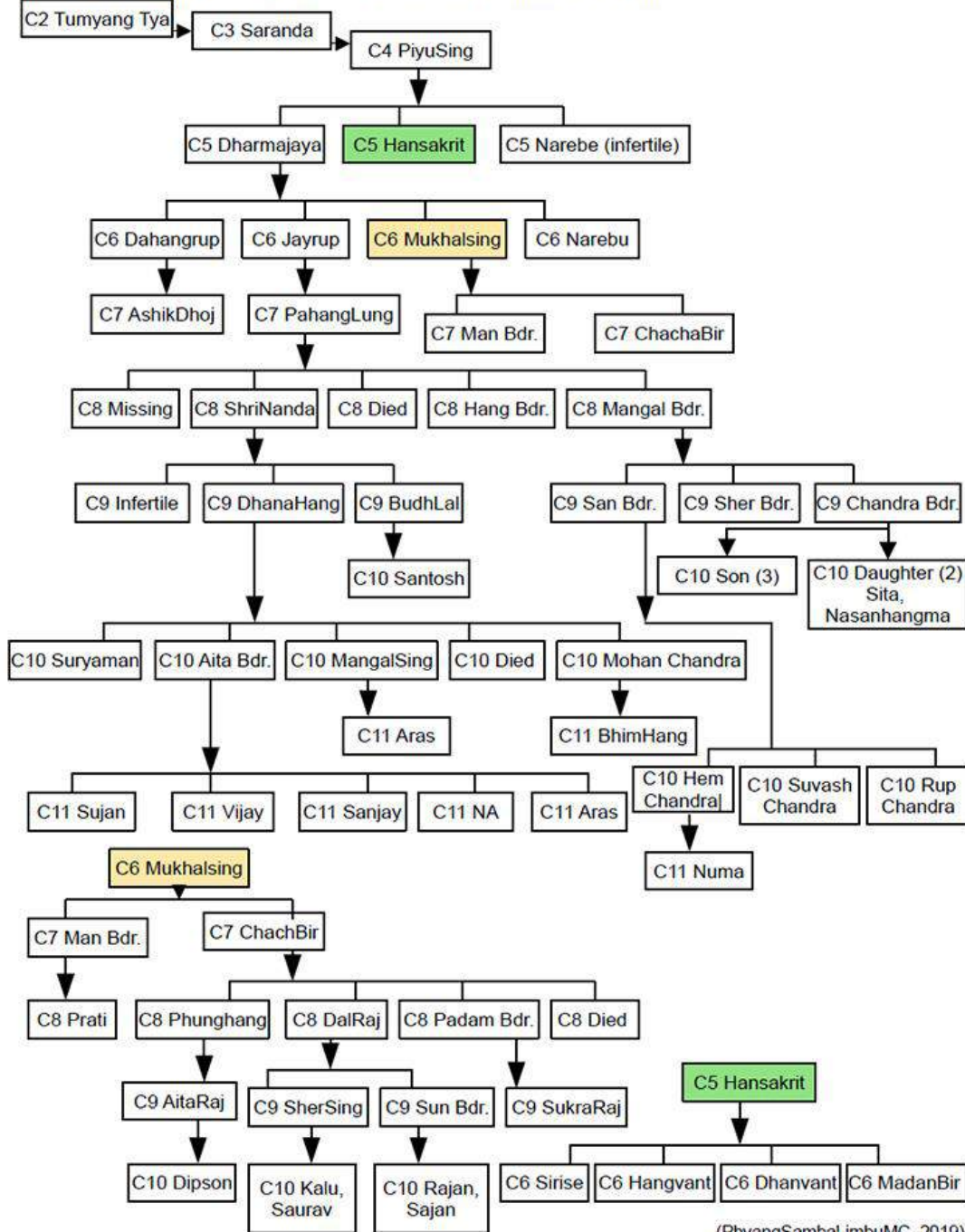


(PhyangAR., 1999; PhyangRB., 2019; PhyangP., 2019; PhyangMH., 2019).

Phyang Samba Ancestry and Genealogical Update by Dr. Nawa Raj Subba

Maiwa Khola family's chronological order

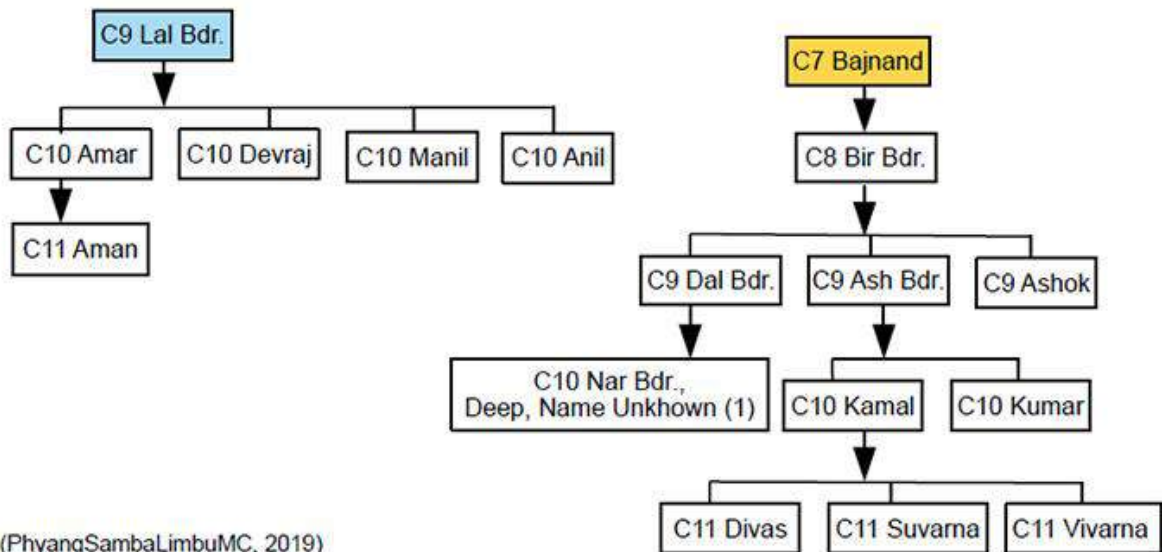
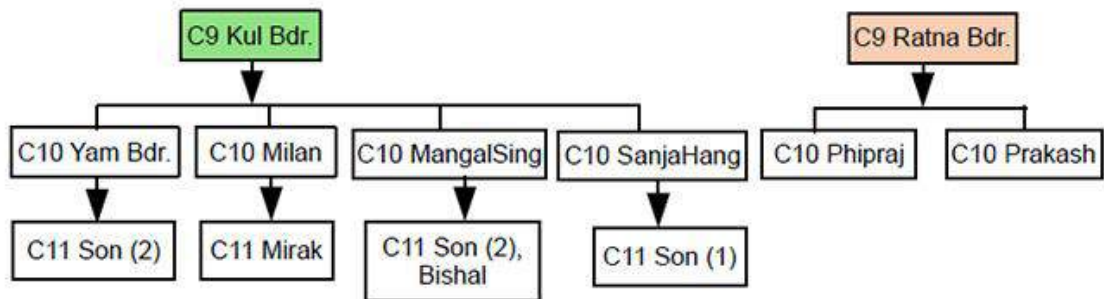
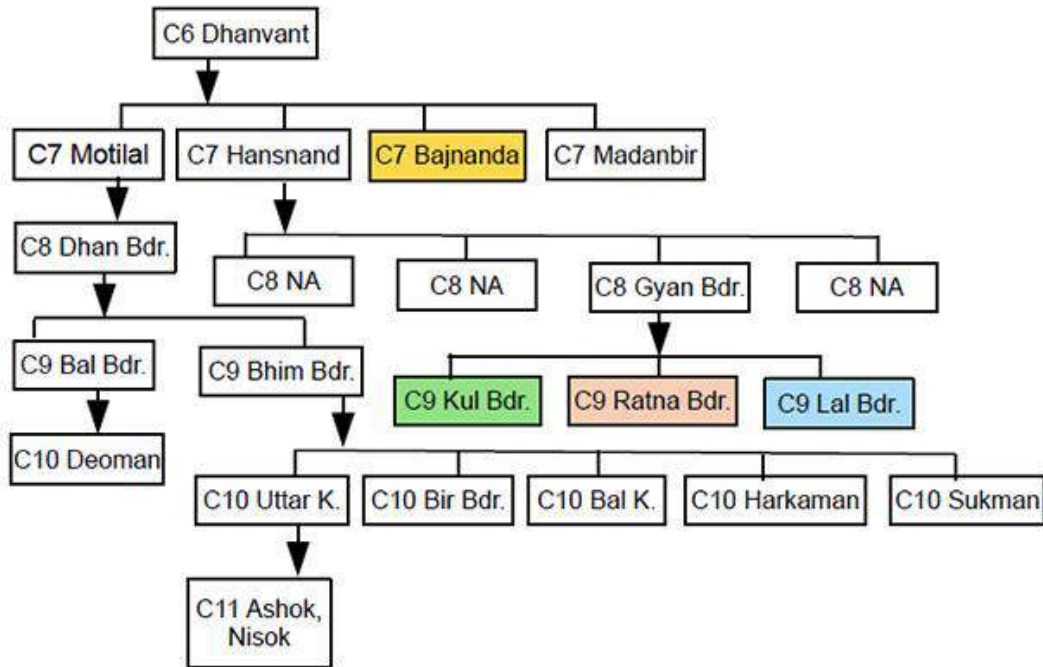
Mewa Khola Samba C4 PiyuSing, C5 Hansakrit, and C6 MukhalSing branches



(PhyangSambaLimbuMC, 2019)

Phyang Samba Ancestry and Genealogical Update by Dr. Nawa Raj Subba

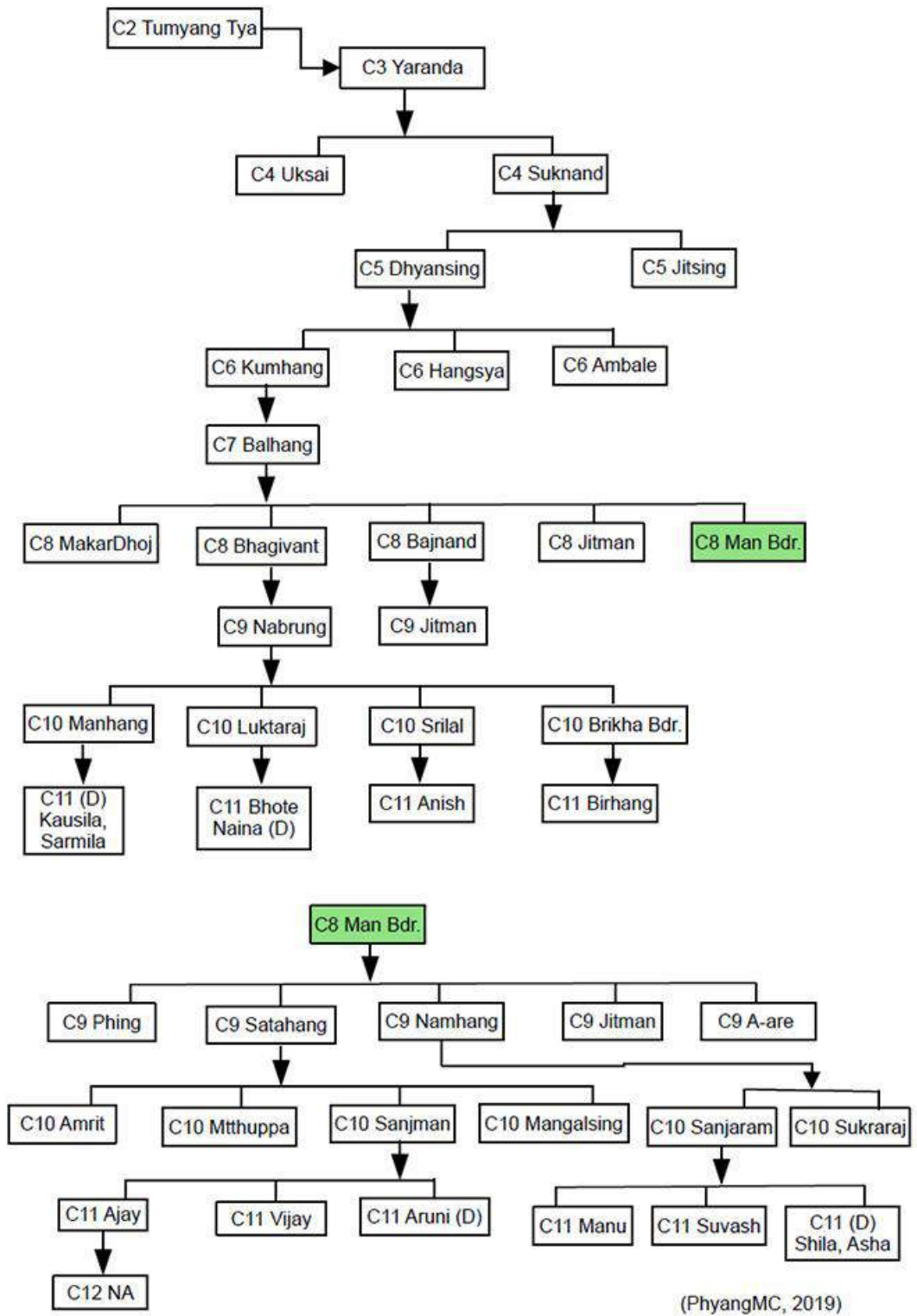
Mewakhola Samba (page 2) C6 Dhanvant branches



(PhyangSambaLimbuMC, 2019)

Phyang Samba Ancestry and Genealogical Update by Dr. Nawa Raj Subba

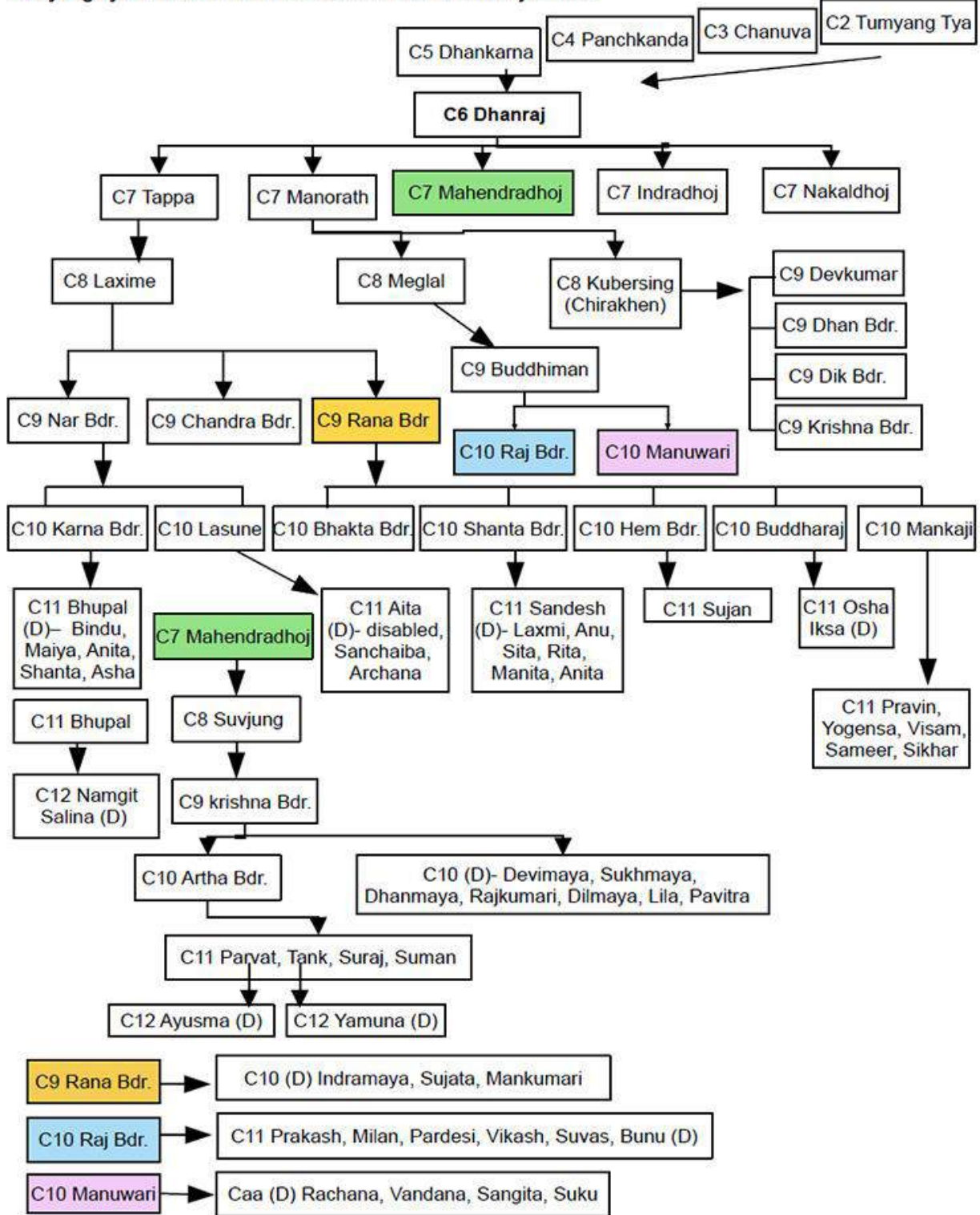
Mewa Khola Samba Taplejung Nepal C3 Yaranda family



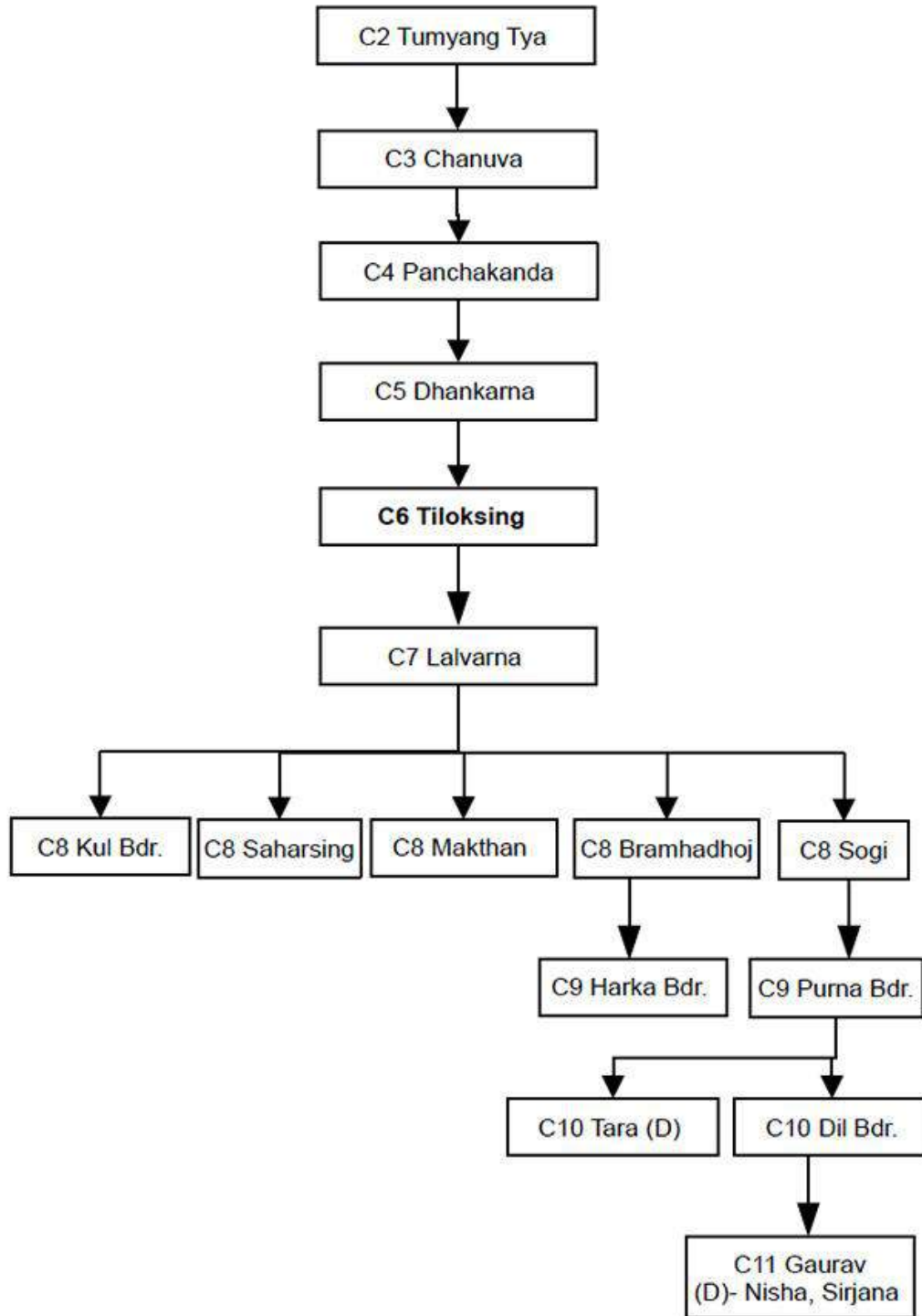
(PhyangMC, 2019)

Phyang Samba Ancestry and Genealogical Update by Dr. Nawa Raj Subba
 Hangpang family's chronological order

Tumyang Tya-Chanuva-Panchkanda-Dhankarna-Dhanraj branch



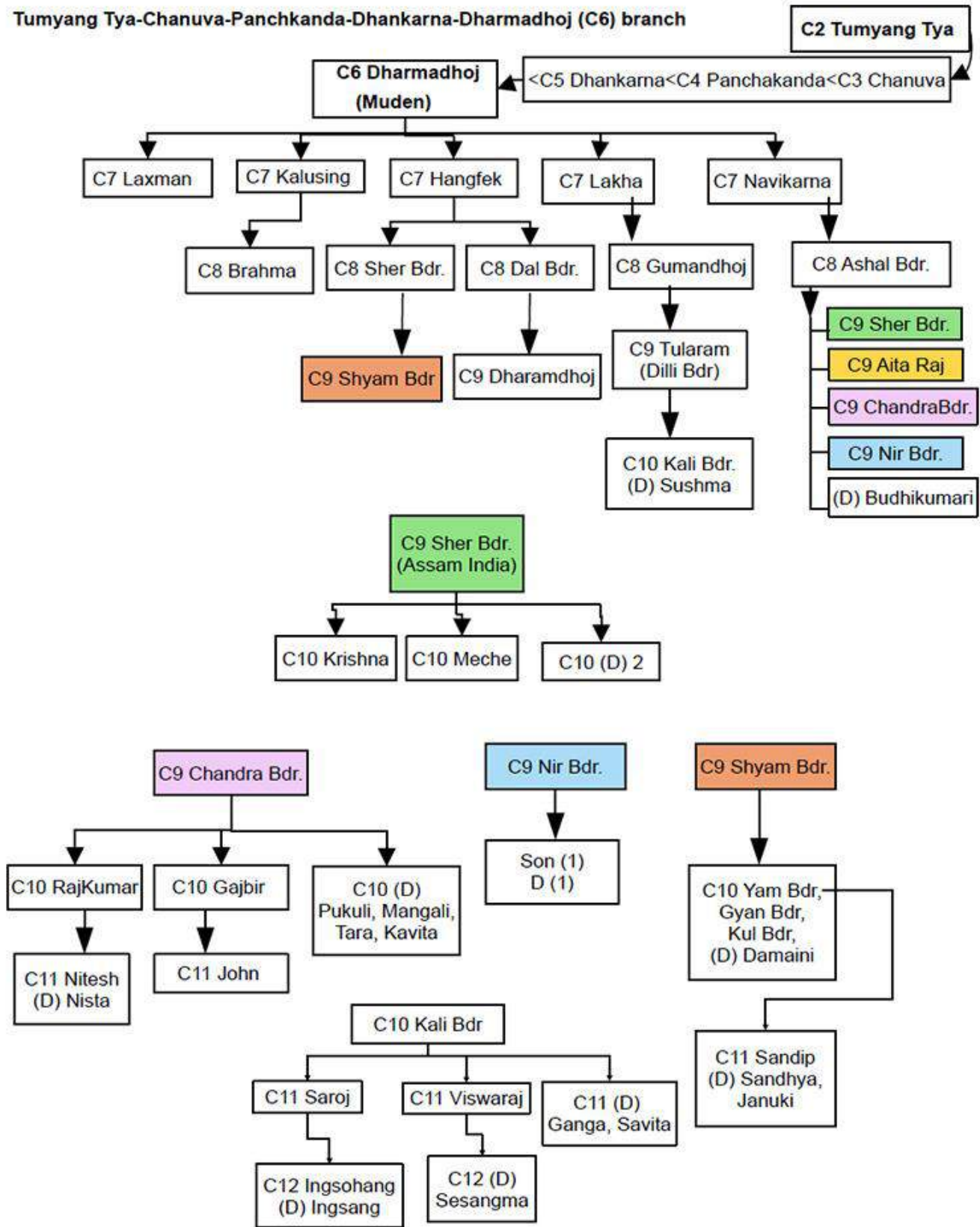
Tumyang Tya-Chanuva-Panchakanda-Dhankarna-Tiloksing (C6) branch



The researcher has updated the original draft of the Genealogy (PhyangA, 1999; PhyangD, 2019)

Phyang Samba Ancestry and Genealogical Update by Dr. Nawa Raj Subba

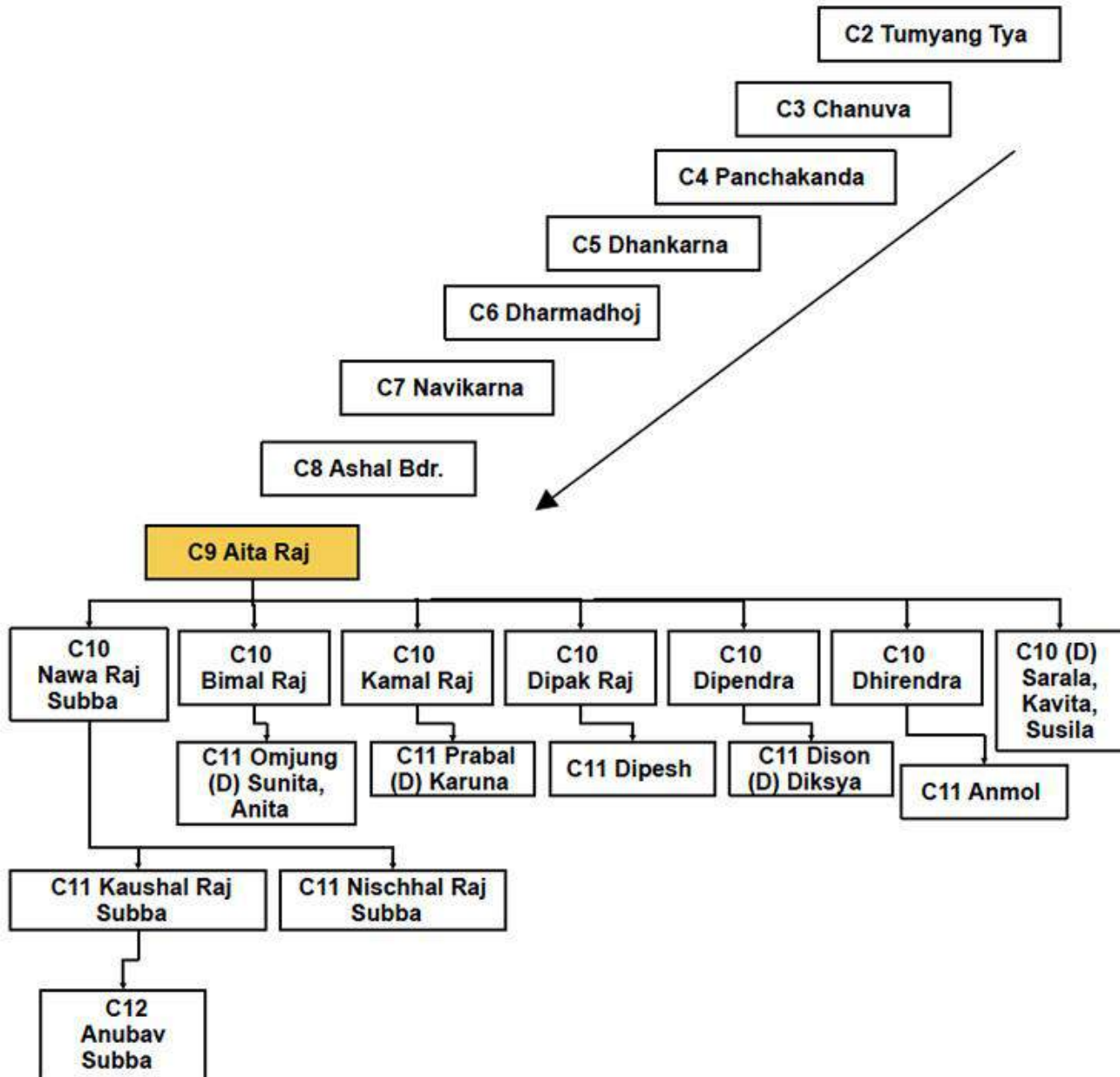
Tumyang Tya-Chanuva-Panchkanda-Dhankarna-Dharmadhoj (C6) branch



The researcher has updated the original draft of the Genealogy (PhyangA, 1999; PhyangD, 2019)

Phyang Samba Ancestry and Genealogical Update by Dr. Nawa Raj Subba

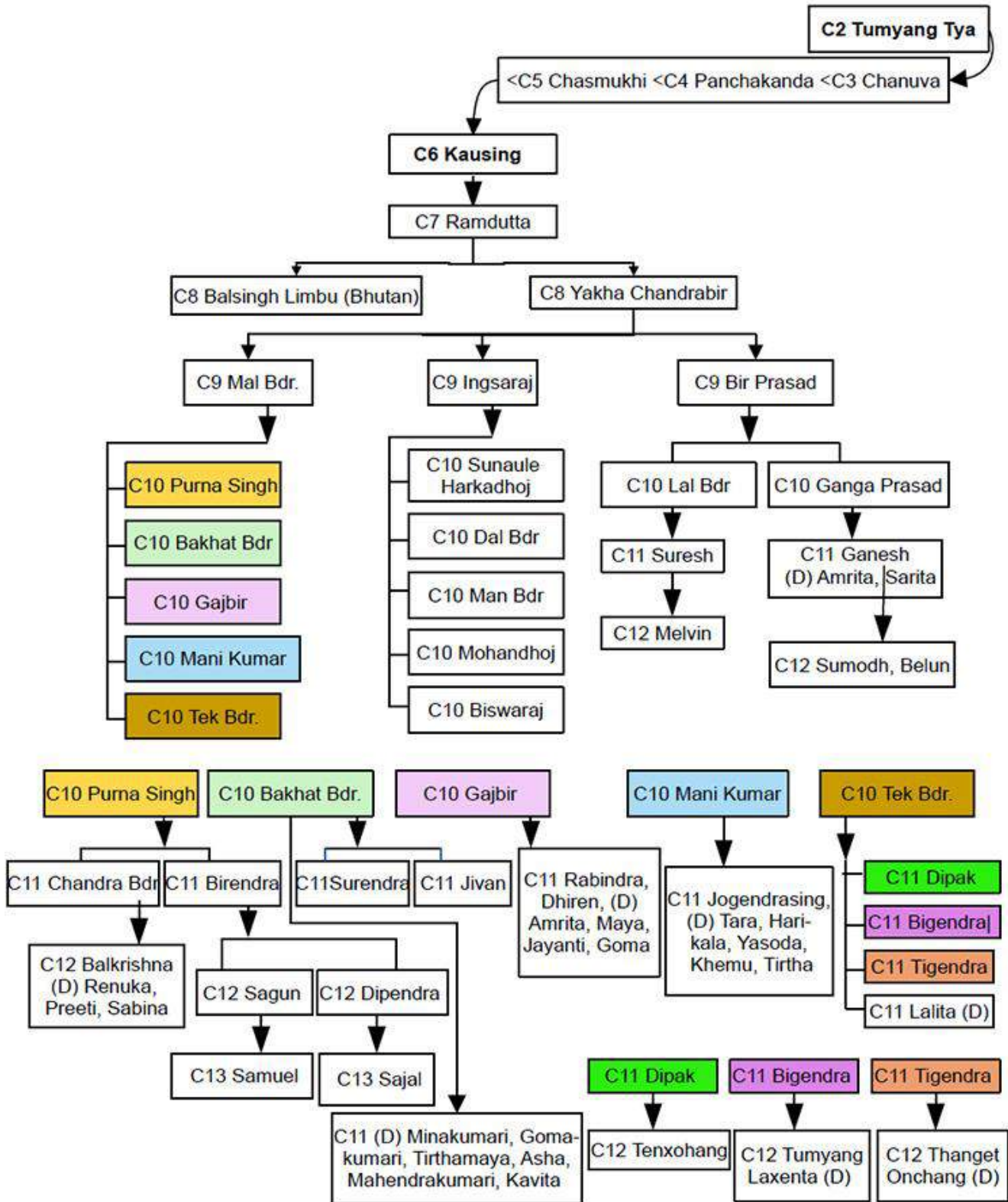
Tumyang Tya-Chanuva-Panchkanda-Dhankarna-Dharmadhoj-Navikarna-Ashal Bdr-Aita Raj (C9) branch



The researcher has updated the original draft of the Genealogy (PhyangA, 1999; PhyangD, 2019)

Phyang Samba Ancestry and Genealogical Update by Dr. Nawa Raj Subba

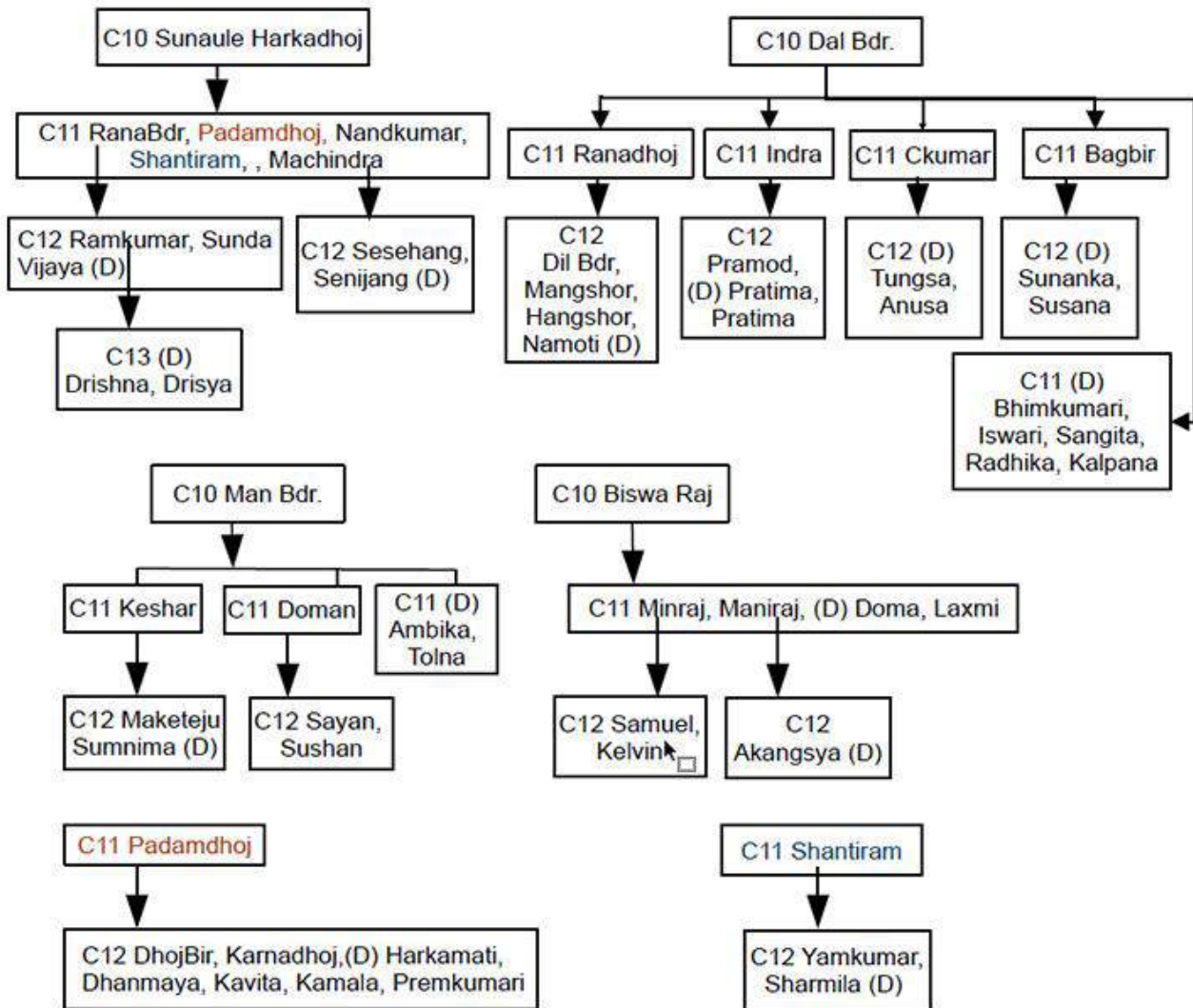
Tumyang Tya-Chanuva-Panchakanda-Chasmukhi-Kausing (C6) branch



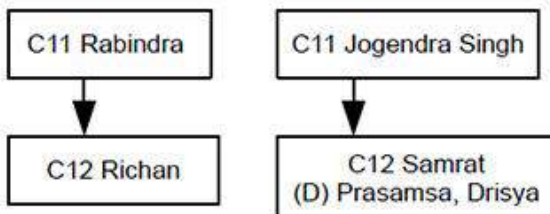
The researcher has updated the original draft of the Genealogy (PhyangA, 1999; PhyangD, 2019)

Phyang Samba Ancestry and Genealogical Update by Dr. Nawa Raj Subba

Tumyang Tya-Chanuva-Panchakanda-Chasmukhi-Kausing-RamDutta-Yakha ChandraBir-Ingasaraj (C9)
 continue



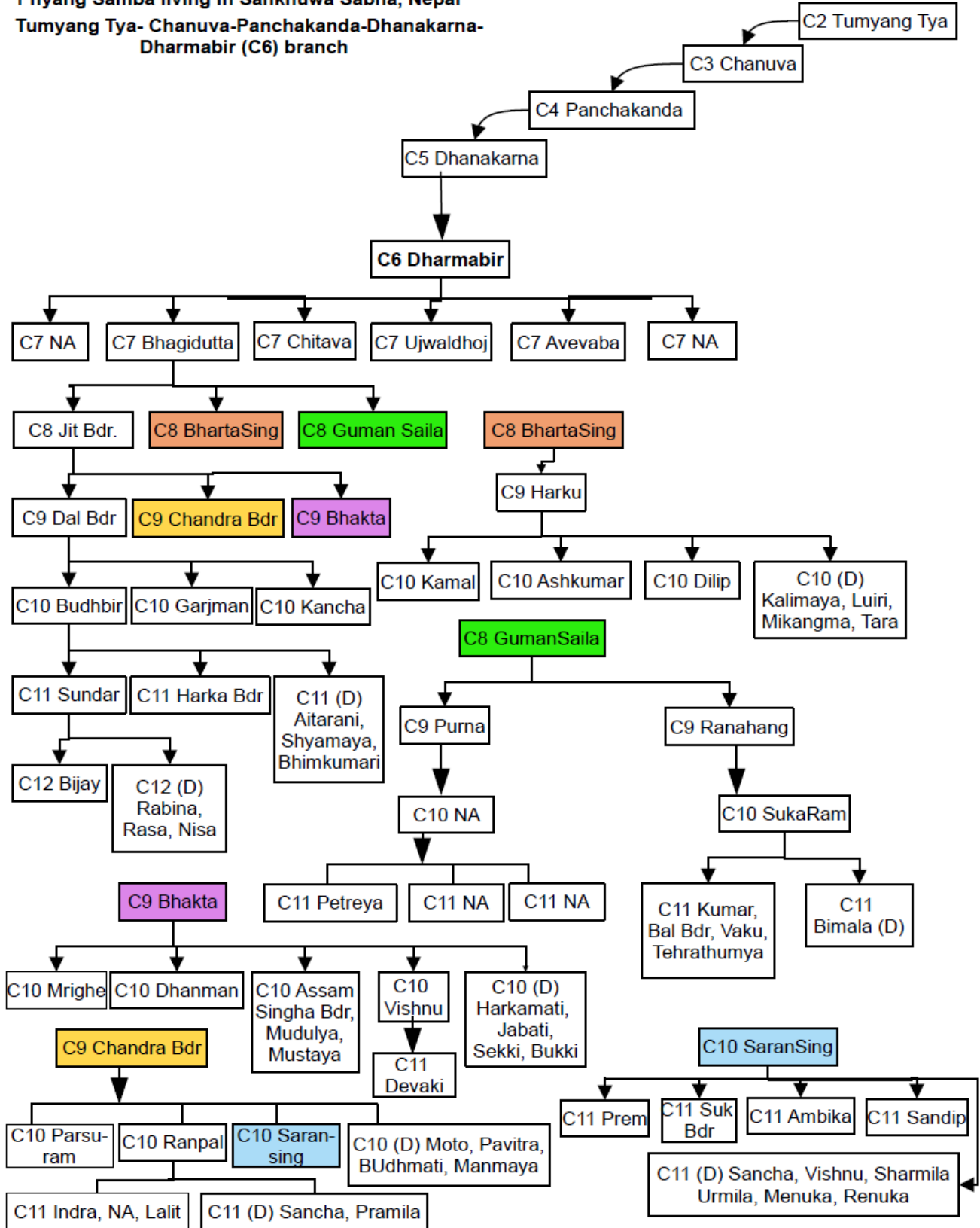
Tumyang Tya-Chanuva-Panchakanda-Chasmukhi-Kausing-RamDutta-Yakha Chandrabir-Mal Bdr (C9)
 continue



The researcher has updated the original draft of the Genealogy (PhyangA, 1999; PhyangD, 2019)

Phyang Samba Ancestry and Genealogical Update by Dr. Nawa Raj Subba
 Sankhuwa Sabha family's chronological order

Phyang Samba living in Sankhuwa Sabha, Nepal
 Tummyang Tya- Chanuva-Panchakanda-Dhanakarna-
 Dharmabir (C6) branch



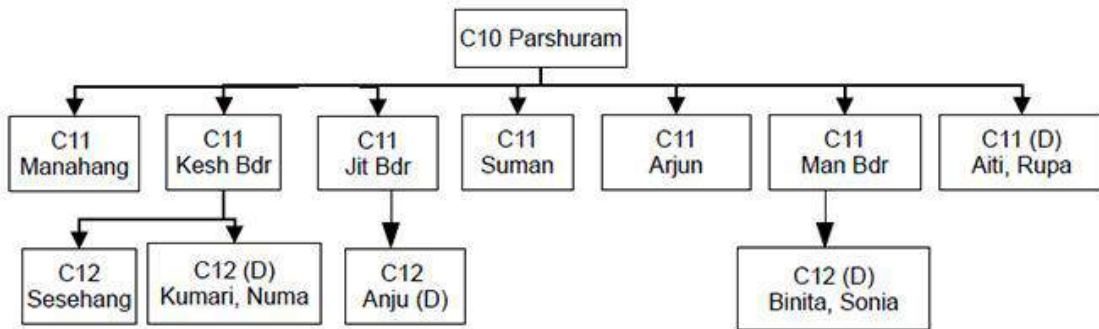
Note: NA= Name Not Available, (D)= Daughter

(PhyangMH, 2019)

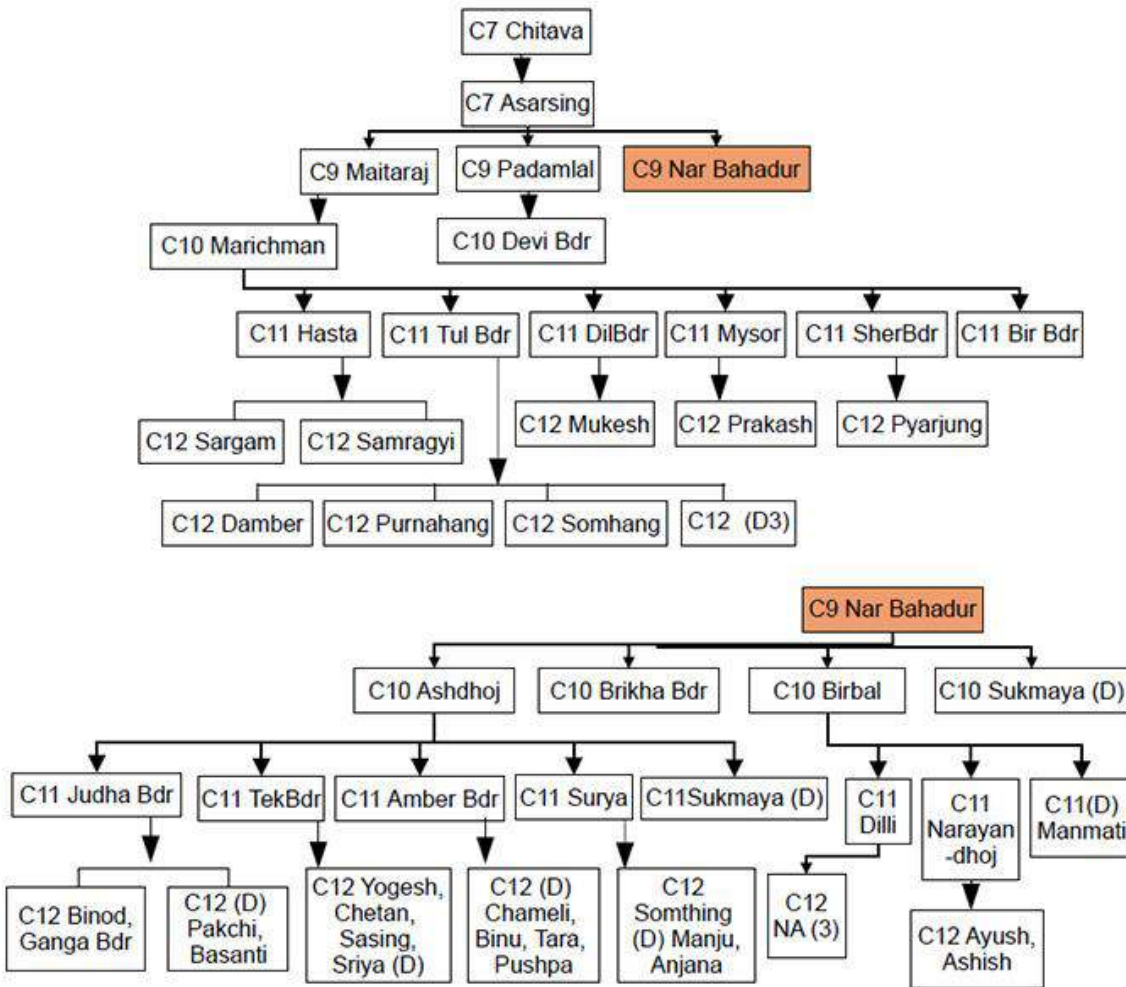
Phyang Samba Ancestry and Genealogical Update by Dr. Nawa Raj Subba

E2 Tummyang Tya-Chanuva-Panchakanda-Dhanakarna-Dharmabir-BhagiDutta-JitBdr-ChandraBdr (C9) branch continue

Phyang Samba family in SankhuwaSabha



C2 Tummyang Tya-Chanuva-Panchakanda-Dhanakarna-DharmaBir (C6) branch continue



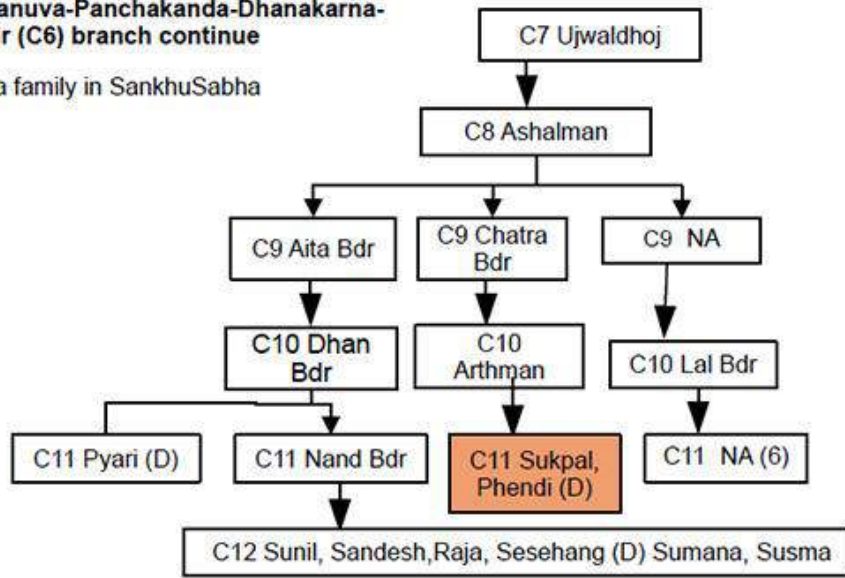
Note: NA= Name Not Available, (D)= Daughter

(PhyangMH, 2019)

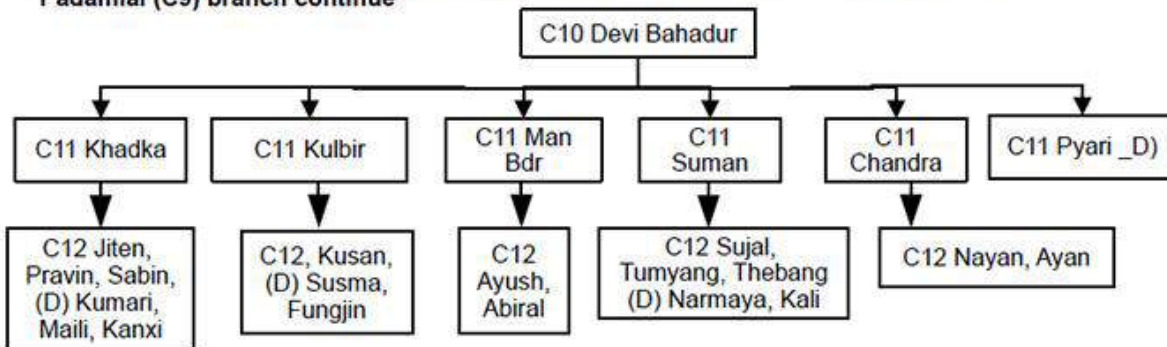
Phyang Samba Ancestry and Genealogical Update by Dr. Nawa Raj Subba

C2 Tummyang Tya-Chanuva-Panchakanda-Dhanakarna-Dharmabir (C6) branch continue

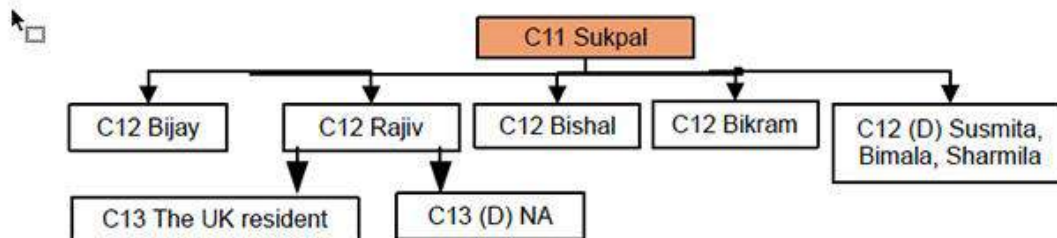
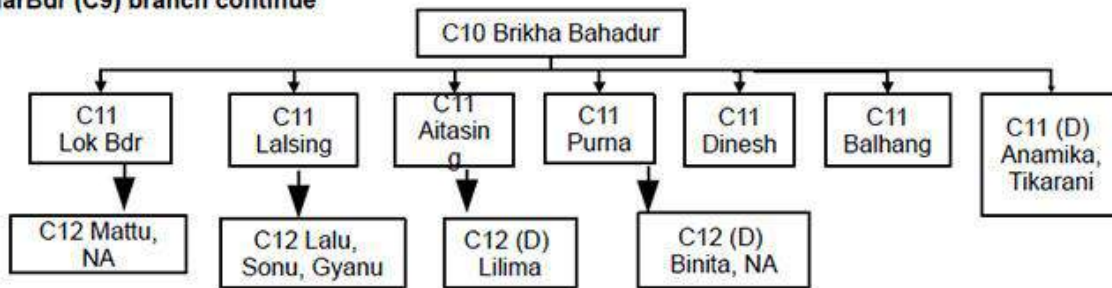
Phyang Samba family in SankhuSabha



C2 Tummyang Tya-Chanuva-Panchakanda-Dhanakarna-Dharmabir-Chitava-Asarsing-Padamial (C9) branch continue



C2 Tummyang Tya-Chanuva-Panchakanda-Dhanakarna-Dharmabir-Chitava-Asarsing-NarBdr (C9) branch continue



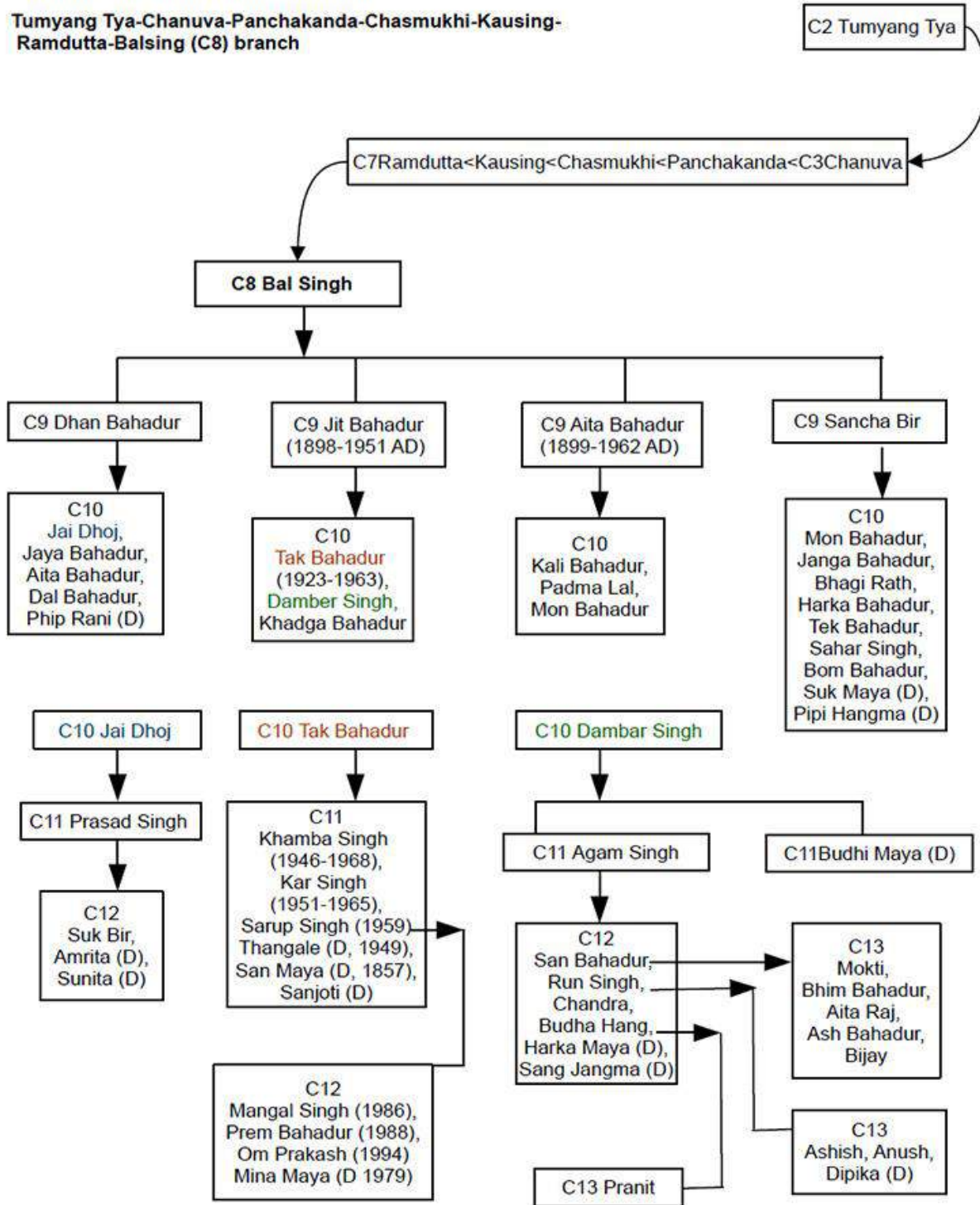
Note: NA= Name Not Available, (D)= Daughter

(PhyangMH, 2019)

Phyang Samba Ancestry and Genealogical Update by Dr. Nawa Raj Subba
 Bhutan family's chronological order

Phyang Samba family living in Bhutan

Tumyang Tya-Chanuva-Panchakanda-Chasmukhi-Kausing-Ramdutta-Balsing (C8) branch



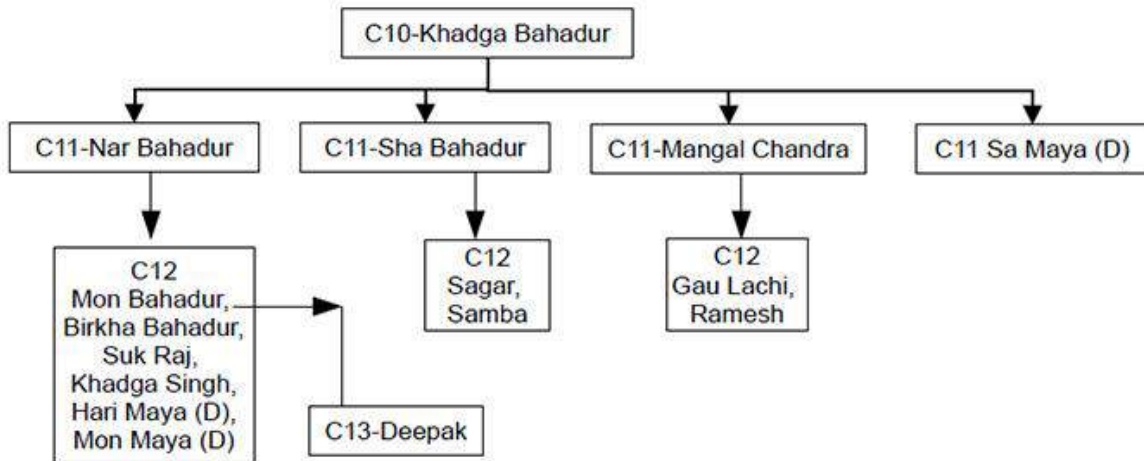
Note: (D)= Daughter; Date of Birth

(PhayangP, 2019)

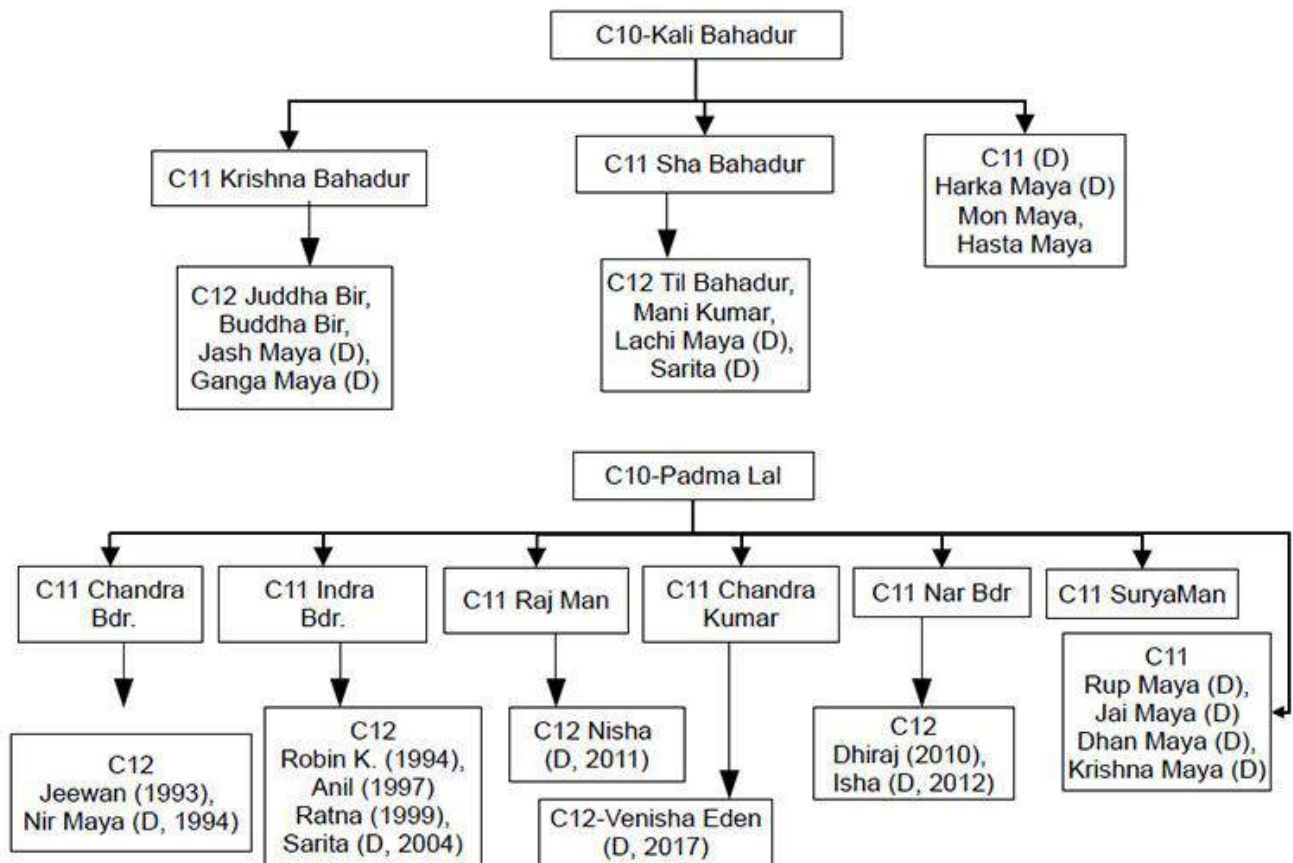
Phyang Samba Ancestry and Genealogical Update by Dr. Nawa Raj Subba

Phyang Samba family living in Bhutan

Tumyang Tya-Chanuva-Panchakanda-Chasmukhi-Kausing-Ramdutta-Balsing-Jit Bdr (C9) branch



Tumyang Tya-Chanuva-Panchakanda-Chasmukhi-Kausing-Ramdutta-Balsing-Aita Bdr (C9) branch



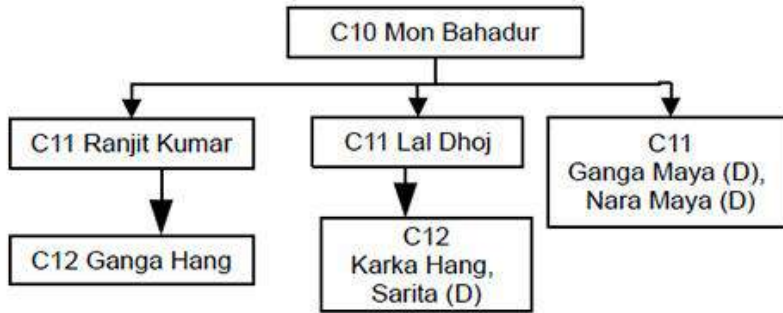
Note: (D)= Daughter, Date of Birth

(PhayangP, 2019)

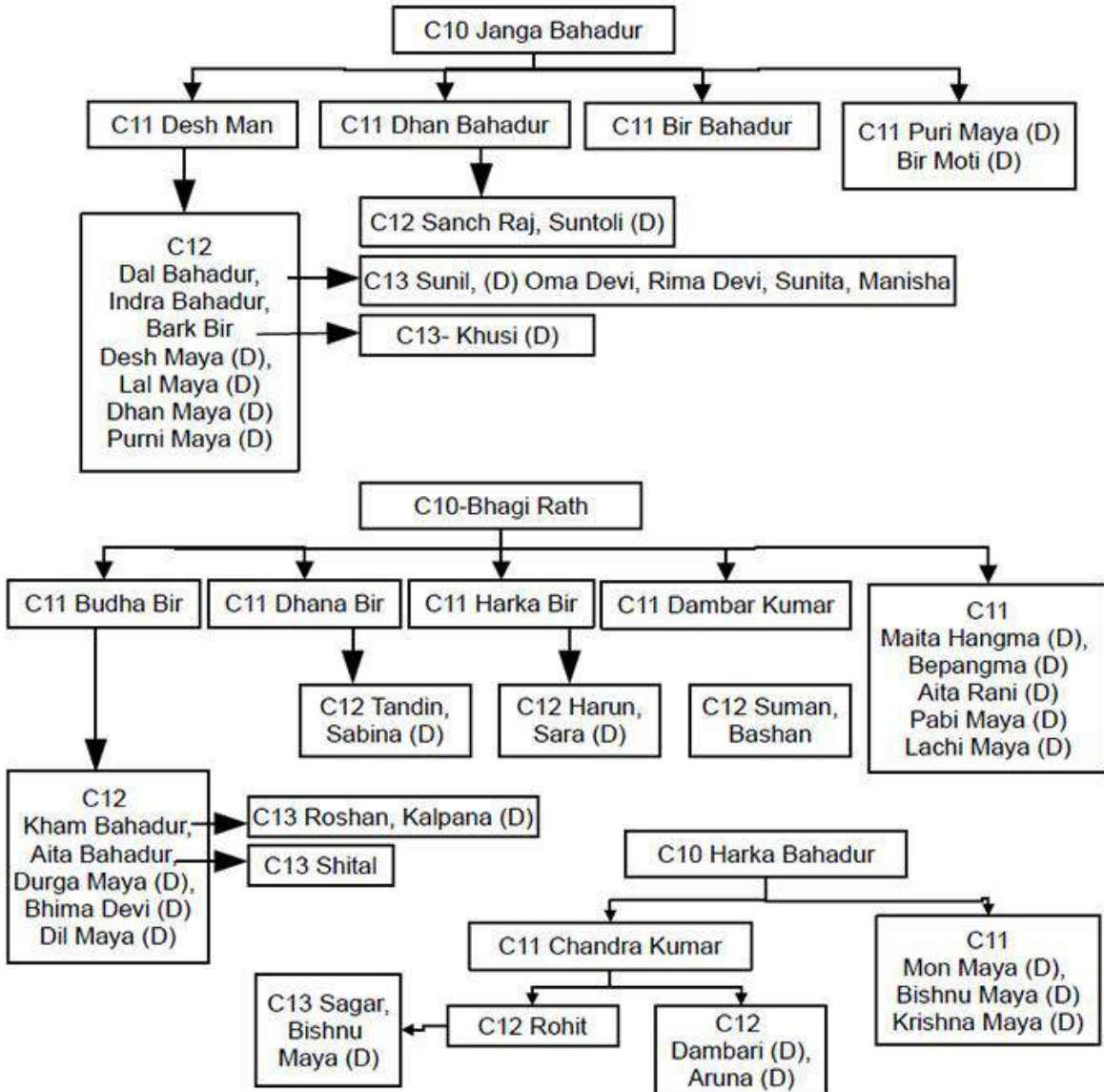
Phyang Samba Ancestry and Genealogical Update by Dr. Nawa Raj Subba

Phyang Samba family living in Bhutan

Tumyang Tya-Chanuva-Panchakanda-Chasmukhi-Kausing-Ramdutta-Balsing-AitaBdr (C9) branch



Tumyang Tya-Chanuva-Panchakanda-Chasmukhi-Kausing-Ramdutta-Balsing-SanchaBir (C9) branch



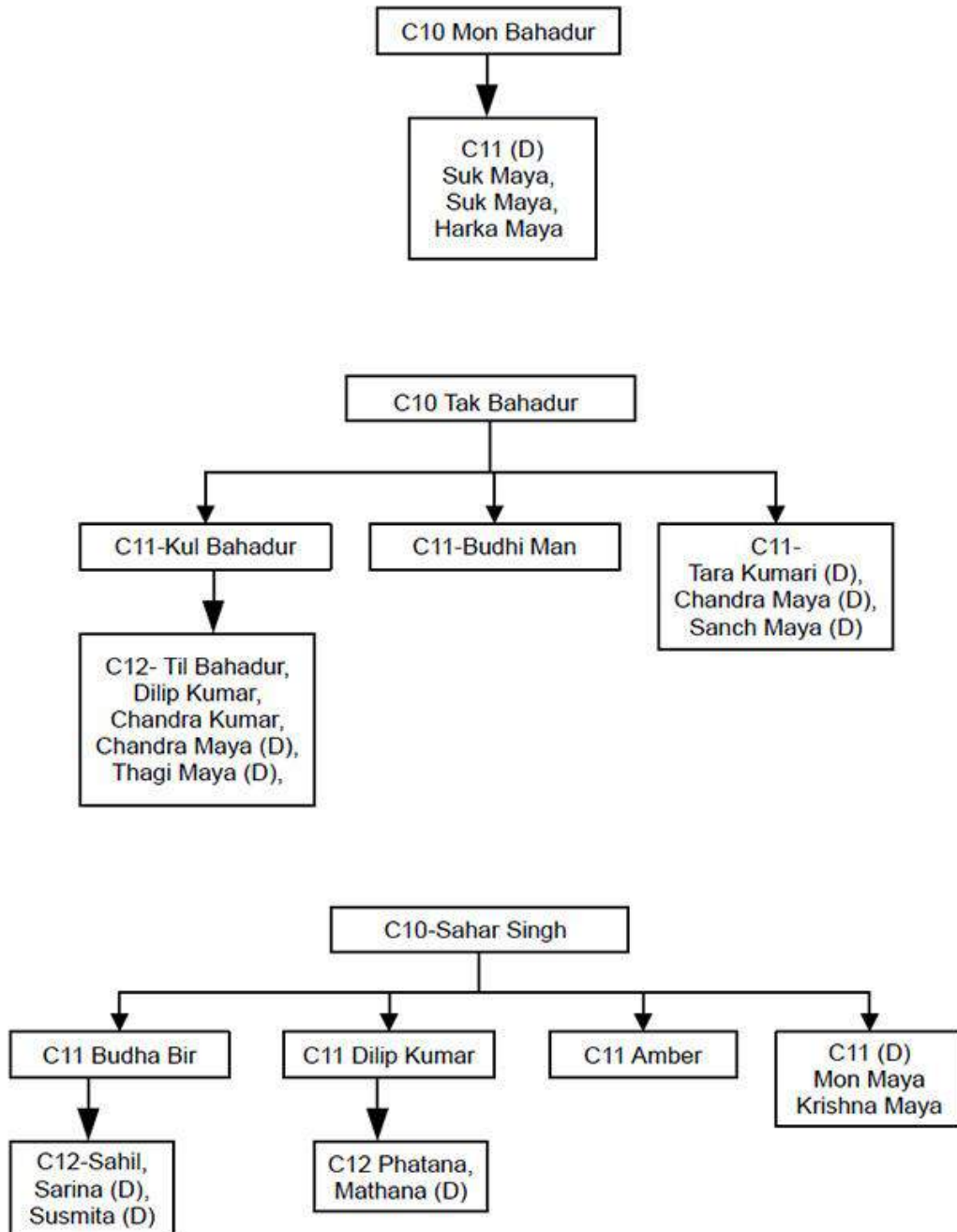
Note: (D)= Daughter; Date of Birth

(PhayangP, 2019)

Phyang Samba Ancestry and Genealogical Update by Dr. Nawa Raj Subba

Phyang Samba family living in Bhutan

Tumyang Tya-Chanuva-Panchakanda-Chasmukhi-Kausing-Ramdutta-Balsing-SanchaBir (C9) branch



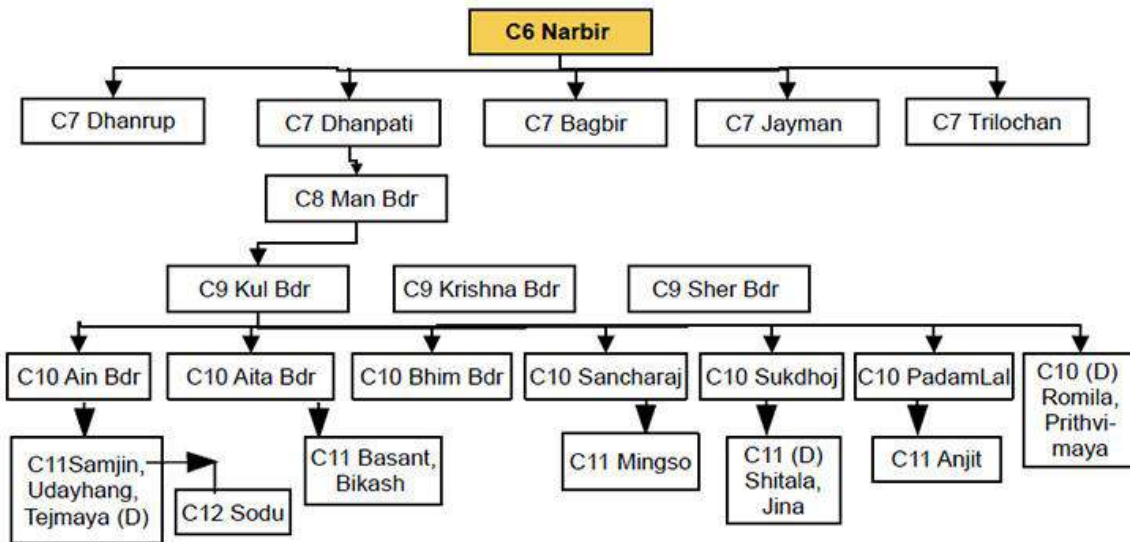
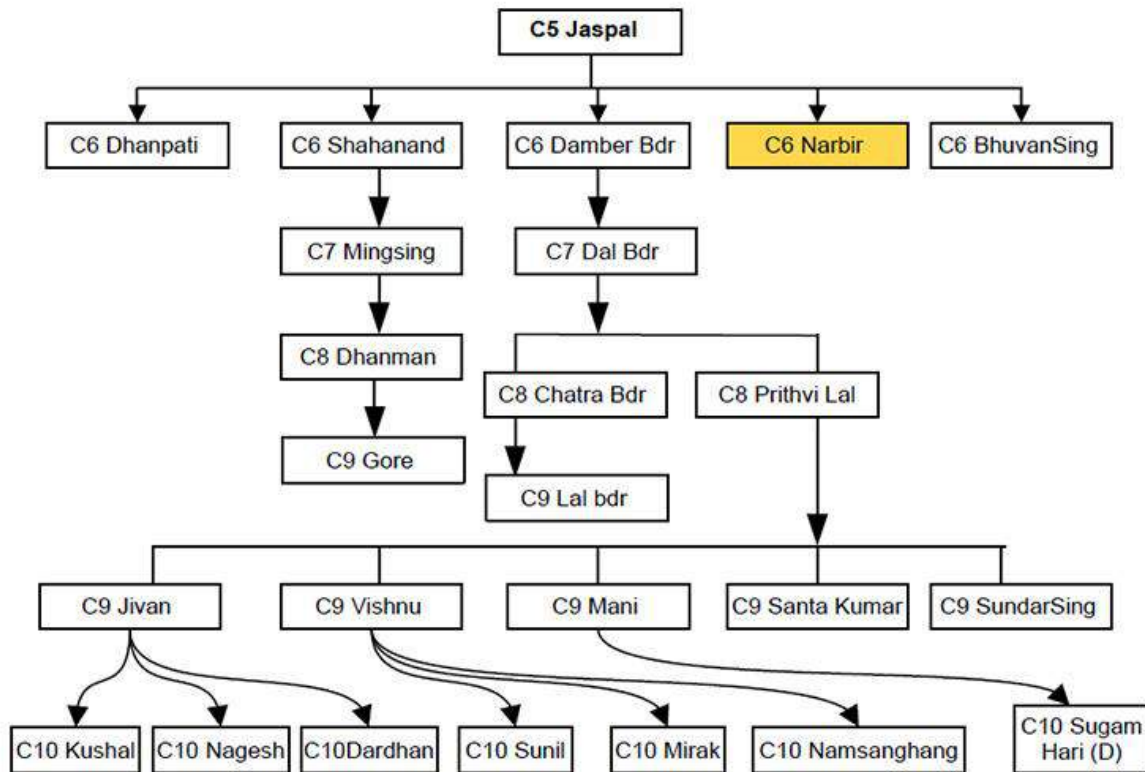
Note: (D)= Daughter

(PhyangP, 2019)

Phyang Samba Ancestry and Genealogical Update by Dr. Nawa Raj Subba
 Panchthar Khola family's chronological order

Phyang Samba family living in Panchthar

C2 Tummyang Hiri-Yubanda-Shahiwal-Jaspal (C5) branch



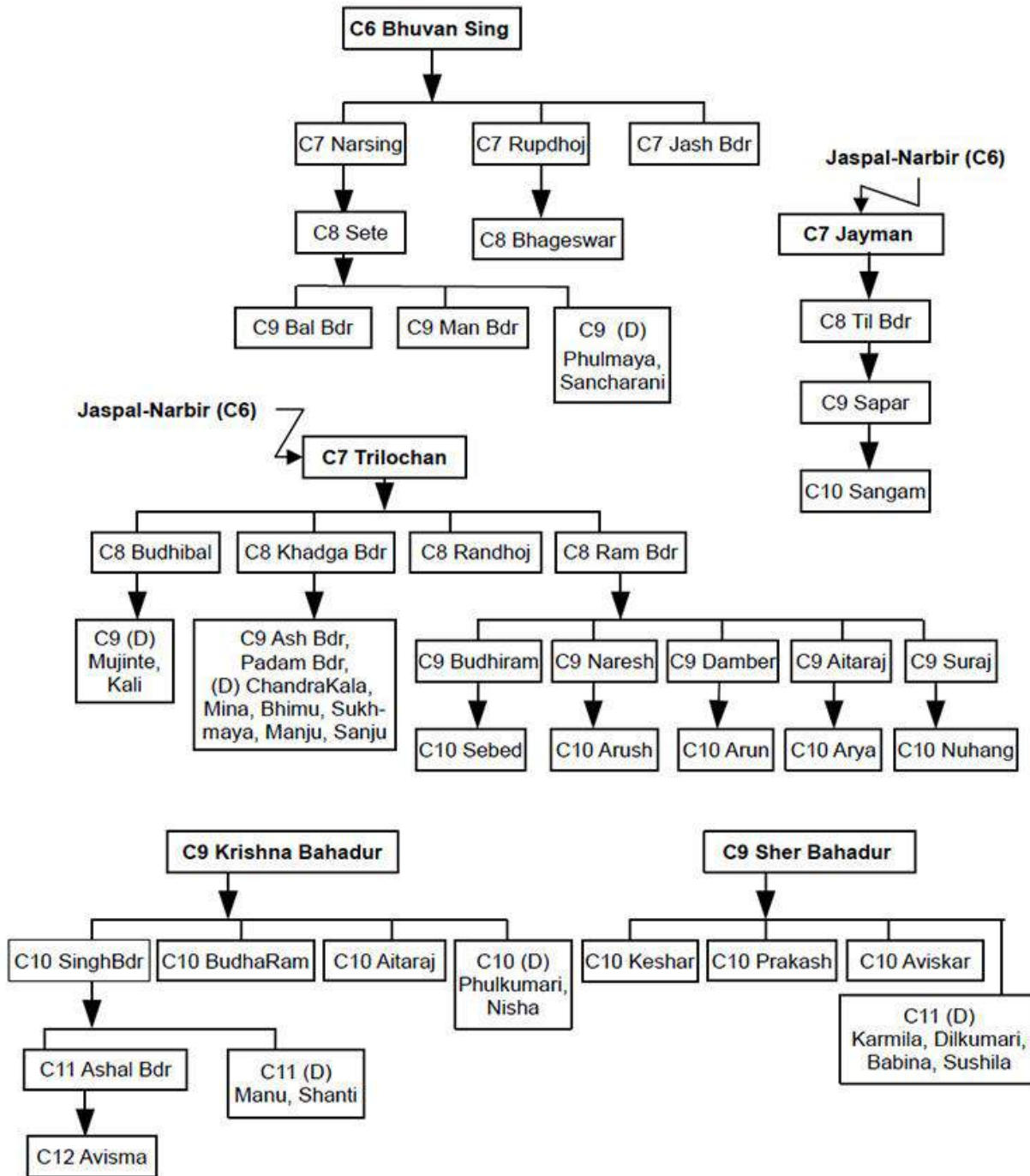
Note: (D)= Daughter

(PhyangRB, 2019)

Phyang Samba Ancestry and Genealogical Update by Dr. Nawa Raj Subba

Phyang Samba family living in Panchthar

C2 Tumyang Hiri-Yubanda-Shahiwal-Jaspal-BhuvanSing (C6) branch



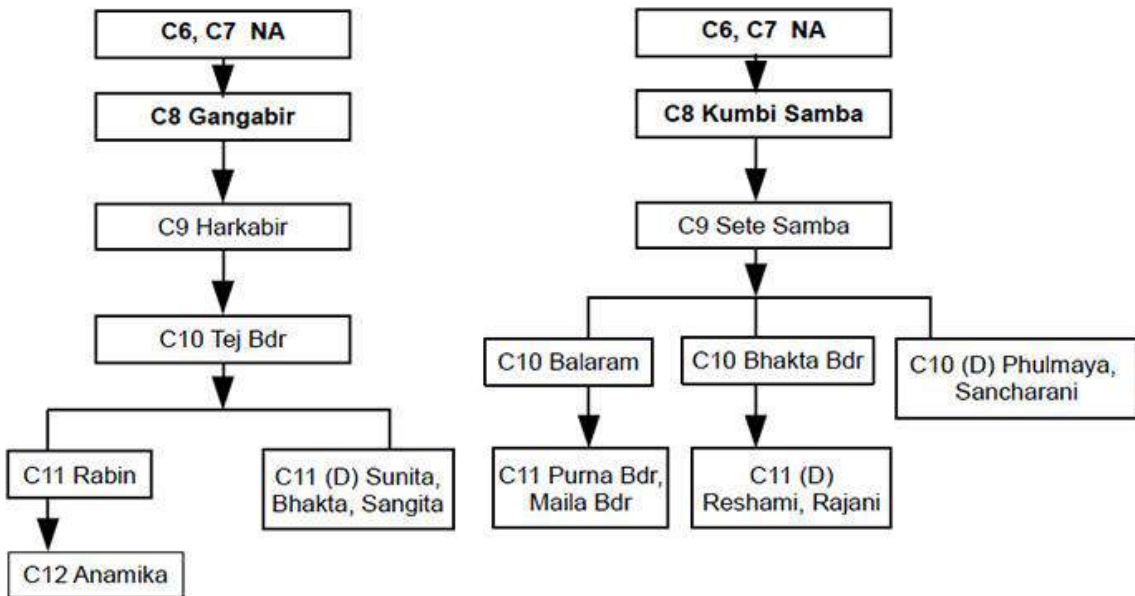
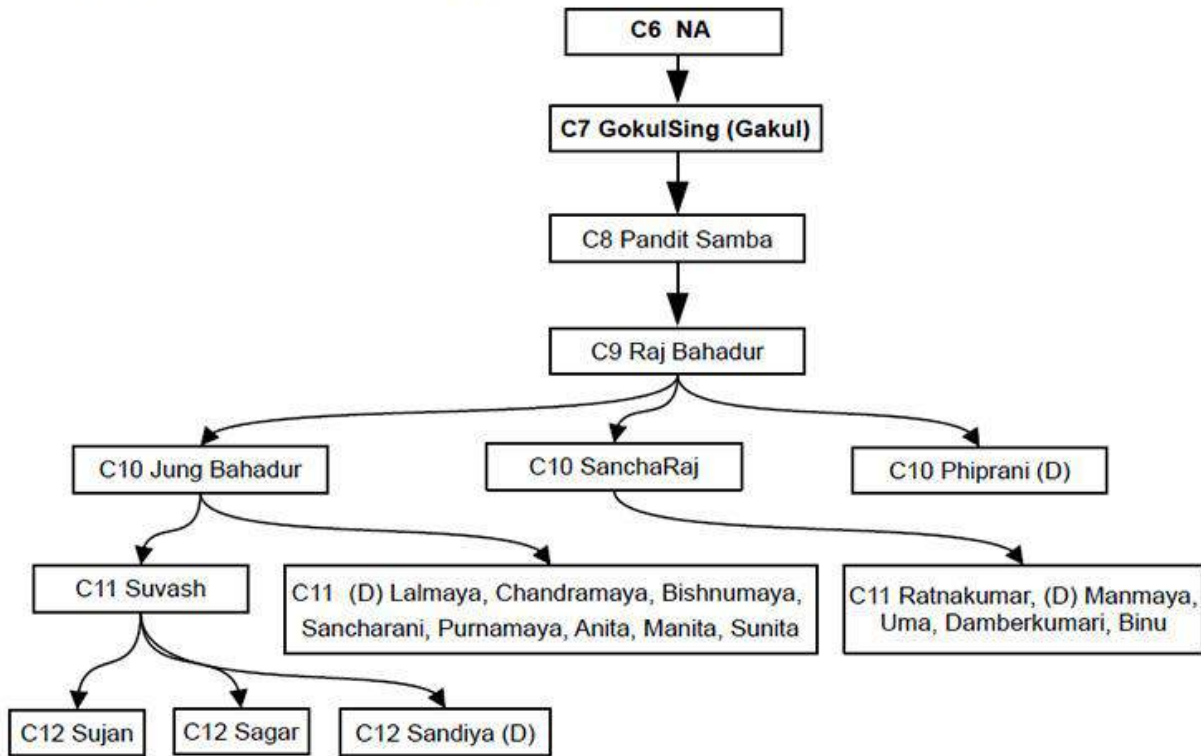
Note: (D)= Daughter

(PhyangRB, 2019)

Phyang Samba Ancestry and Genealogical Update by Dr. Nawa Raj Subba
 Sikkim family's chronological order

Phyang Samba family living in Sikkim India

C2-Tumyang Hiri-Yubanda-Shahiwal-Jaspal (C5) branch



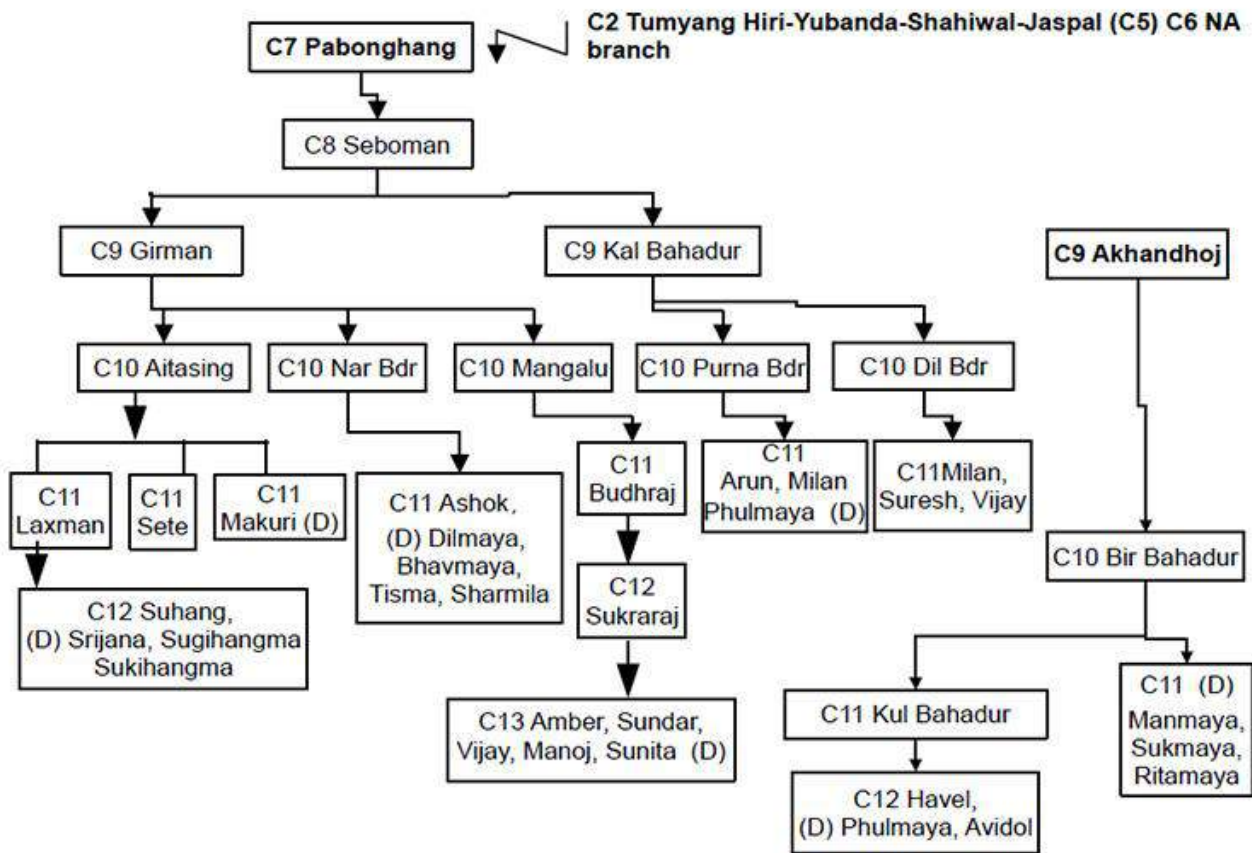
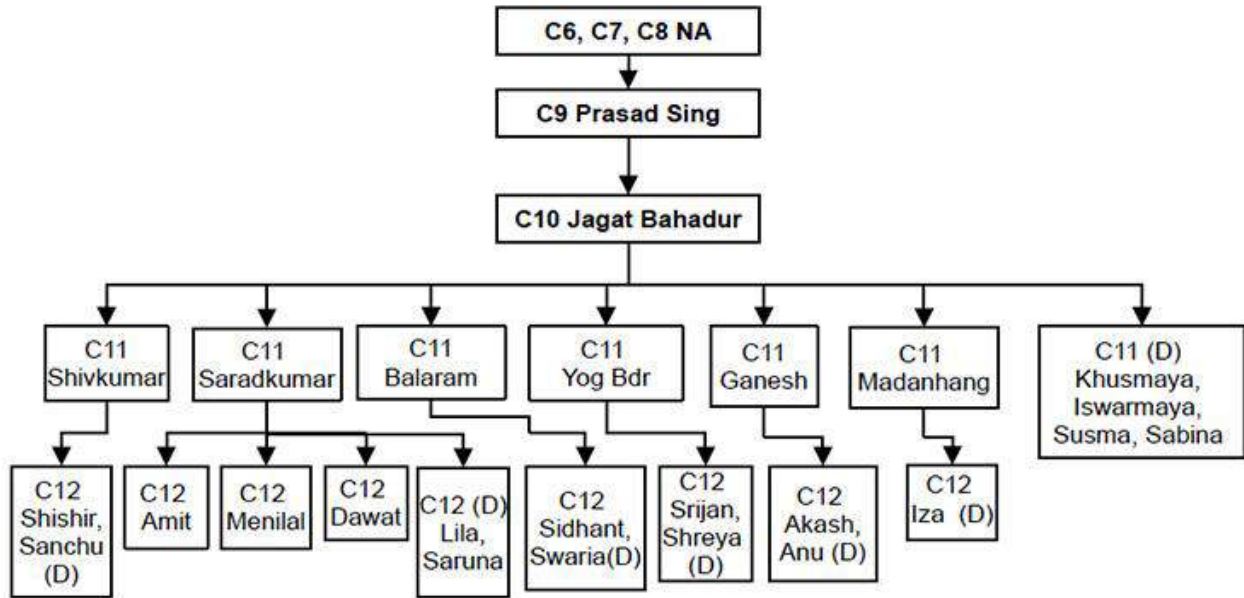
Note: NA= Name Not Available; (D)= Daughter

(PhyangYR, 2019)

Phyang Samba Ancestry and Genealogical Update by Dr. Nawa Raj Subba

Phyang Samba family in Sikkim

C2 Tумыang Hiri-Yubanda-Shahiwal-Jaspal (C5) branch



Note: NA= Name Not Available; (D)= Daughter

(PhyangYR, 2019)